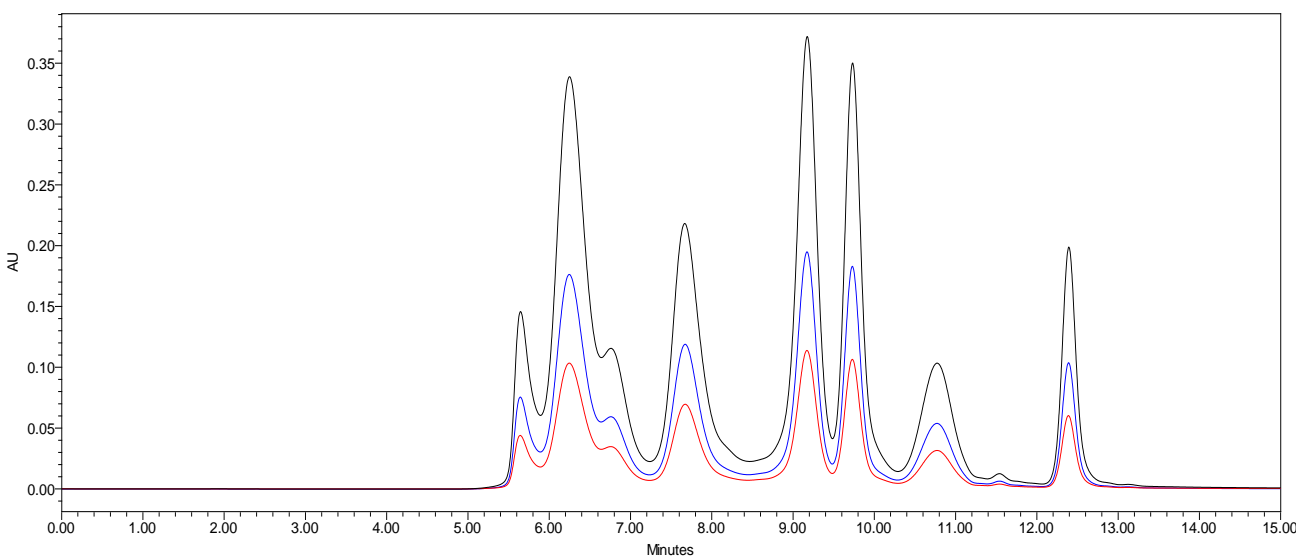




Protein Loading Capacity Study on SRT[®]-C 300



Column: SRT[®] C-300 (5 μ m, 300 \AA , 7.8x300 mm)
Mobile Phase: 150 mM sodium phosphate buffer, pH 7
Temperature: Ambient (~23[°] C)
Flow Rate: 1.0 mL/min
Detection: UV 214 nm
Injection Volume: 3, 5, 10 μ L
Samples: Protein mixture: 1) Thyroglobulin aggregate, 2) Thyroglobulin, 670kD; 3) γ -Globulin dimer; 4) γ -Globulin, 158 kD; 5) Ovalbumin, 44kD; 6) Myoglobin, 17.6 kD; 7) Poly-DL-alanine (1-5 kD), 8) Uracil, 120D

Keywords: Size exclusion, SRT-C, protein, peptide