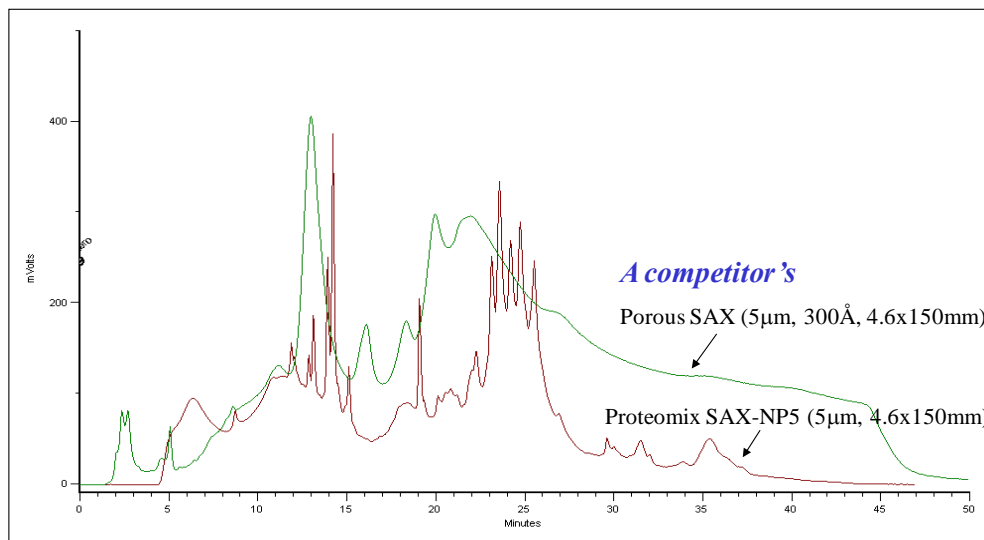




## Analysis of horse serum on Proteomix<sup>®</sup> SAX-NP5 (5 $\mu$ m, 4.6x150 mm) – Non-porous vs. Porous Ion-exchanger



Columns: Proteomix<sup>®</sup> SAX-NP5 (5 $\mu$ m, 4.6x150mm) vs Porous SAX (5 $\mu$ m, 300 $\text{\AA}$ , 4.6x150mm)  
Mobile Phases: A: 25 mM Tris acetate, pH 7.3; B: A+ 0.8 M sodium acetate  
Gradient: 0-50%-70%B (0-25-28 min)  
Flow Rates: 0.5 mL/min for SAX-NP5; 1.0 mL/min for Porous SAX  
Detection: UV 280 nm  
Injection Volume: 20  $\mu$ L  
Sample: a horse serum (2 x diluted)  
(Courtesy of Miyako Kawakatsu, M&S Instruments Inc.)

Keywords: Ion-exchange, Proteomix, strong anion exchange, non-porous, horse serum