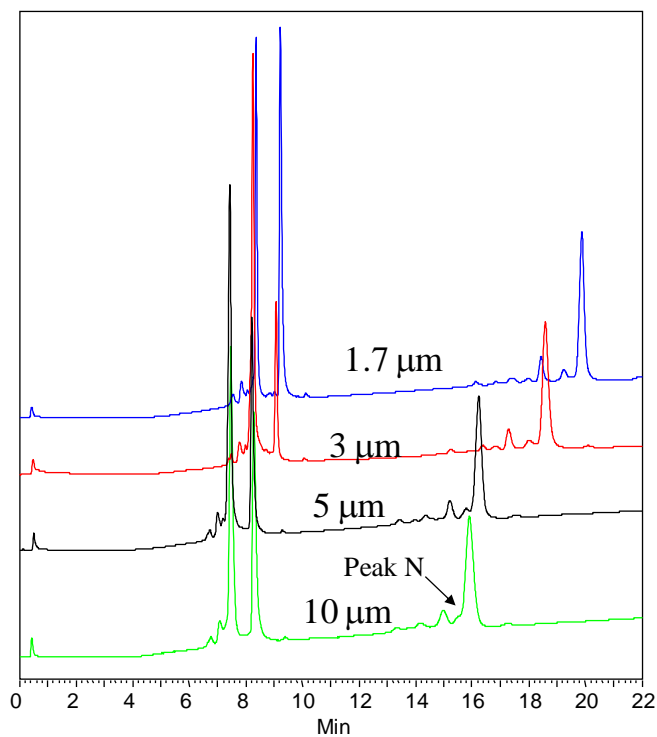




Separation of Proteins on Proteomix[®] WCX – Effect of Particle Size



Column: Proteomix[®] WCX-NP (4.6x50 mm)
Mobile Phases: A: 20 mM phosphate; B: A+1.0 M NaCl
Gradient: 0-100%B (20 min)
Flow Rates: 1.0 mL/min (WCX-NP3, WCX-NP5, WCX-NP10); 0.75 mL/min (WCX-NP1.7)
Detection: UV 280 nm
Samples: 1. Ribonuclease A 2. Cytochrome C 3. Lysozyme

Keywords: Ion exchange, Proteomix, weak cation exchange, protein, particle size