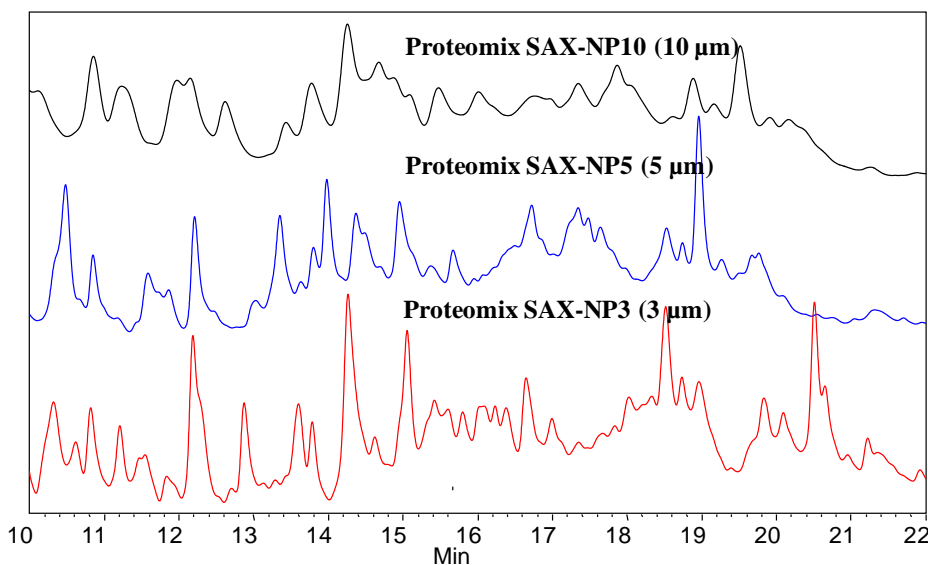
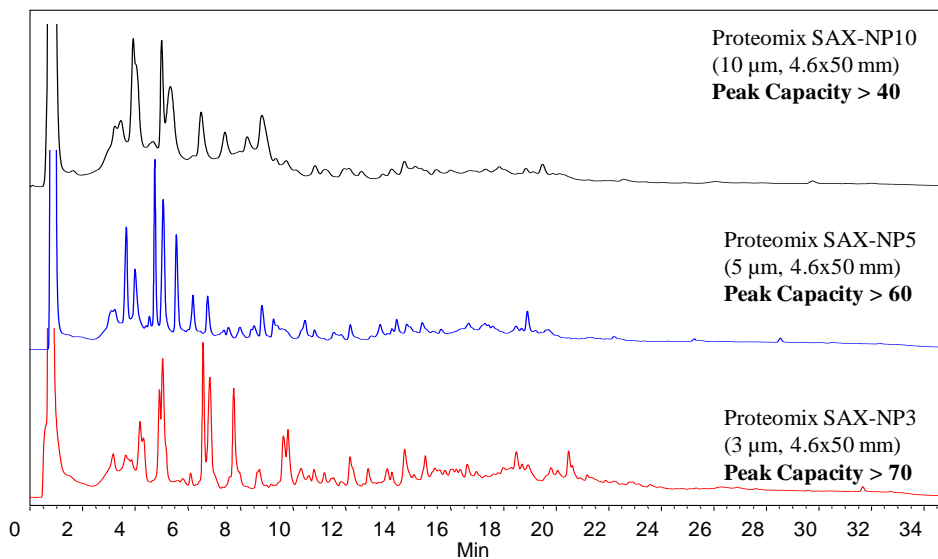




Separation of *E. coli* Lysate on Proteomix[®] SAX (4.6x50 mm)



Columns: Proteomix[®] SAX-NP10, NP5, NP3 (4.6x50 mm)
Mobile Phases: A: 20 mM Tris, pH 9.0; B: A + 0.5 M NaCl
Gradient: 0-100% B (30 min)
Flow Rate: 0.5 mL/min
Detection: UV 280 nm
Temperature: 25 °C
Sample: 2.5 mg/mL
Injection Volume: 10 μL
Sample: *E. coli* Lysate

Keywords: Ion-exchange, Proteomix, strong anion exchange, *E. coli*, Lysate, high peak capacity