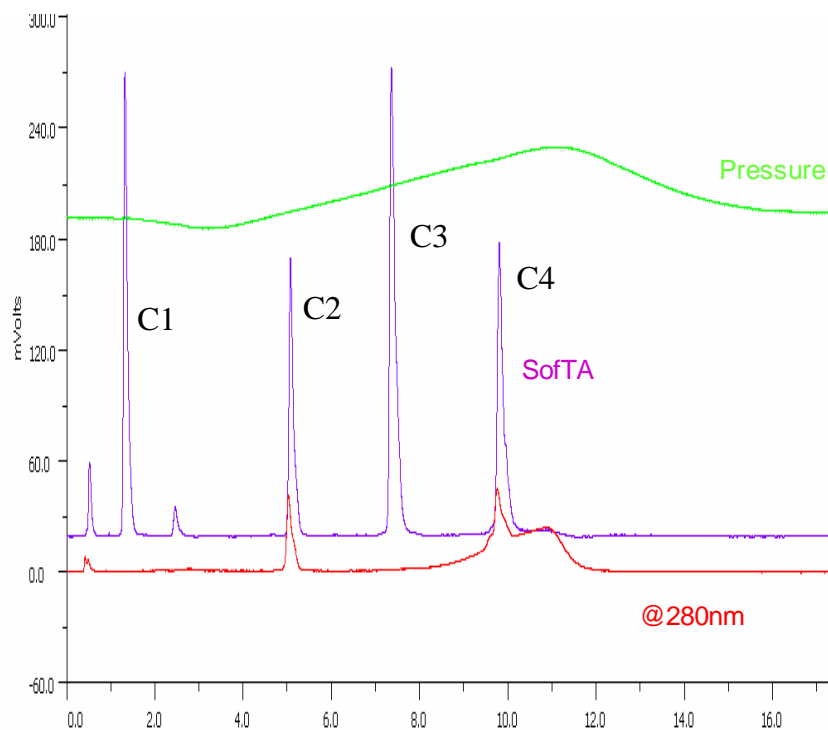




Separation of Peptide on Proteomix[®] SCX-NP3 (3 μ m, 4.6x50 mm) – volatile buffer



Column: Proteomix[®] SX-NP3 (3 μ m, 4.6x50mm)
Mobile Phases: A, 5 mM CH₃COONH₄; B, 0.5 M CH₃COONH₄:ACN=4:1 (v/v)
Gradient: 0-50% B (20 min)
Flow Rate: 0.6 mL/min
Detection: ELSD SofTA & UV 280 nm
Injection Volume: 5 μ L
Concentration: 0.1 mg/mL

Peptide	Sequence	Net Charge
C1	Ac-Gly-Gly-Gly-Leu-Gly-Gly-Ala-Gly-Gly-Leu-Lys-amide	+1
C2	Ac-Lys-Tyr-Gly-Leu-Gly-Gly-Ala-Gly-Gly-Leu-Lys-amide	+2
C3	Ac-Gly-Gly-Ala-Leu-Lys-Ala-Leu-Lys-Gly-Leu-Lys-amide	+3
C4	Ac-Lys-Tyr-Ala-Leu-Lys-Ala-Leu-Lys-Gly-Leu-Lys-amide	+4

(Courtesy of Miyako Kawakatsu, M&S Instruments Inc.)

Keywords: Ion-exchange, Proteomix, strong cation exchange, peptide, volatile buffer