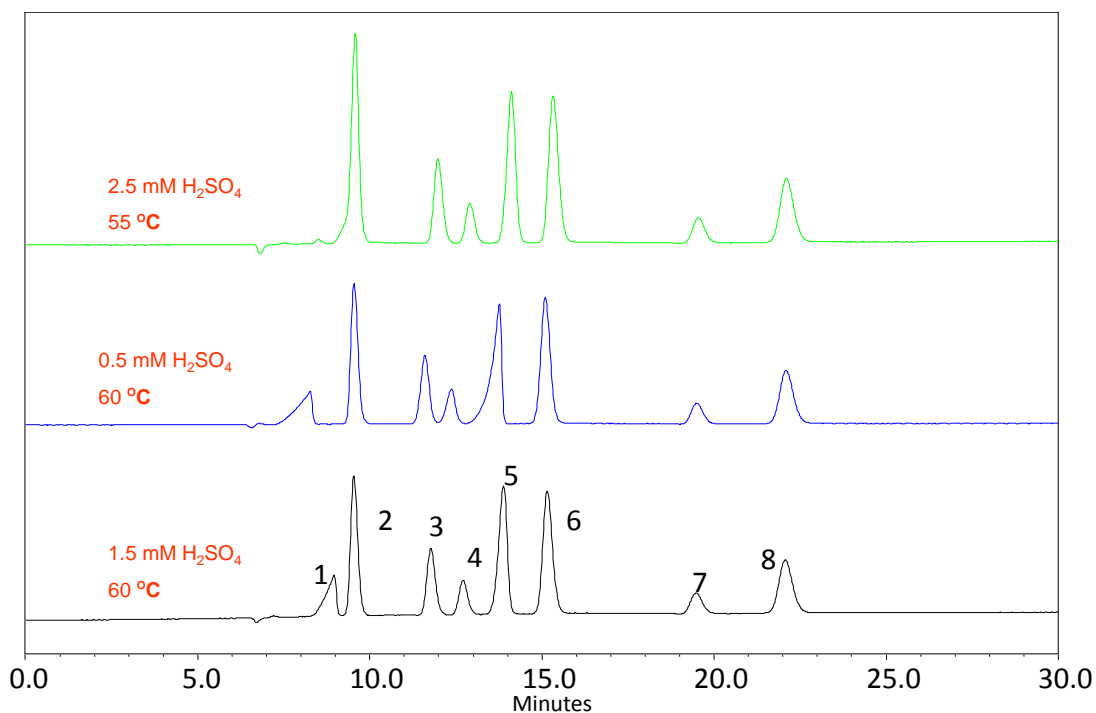




## Analysis of Mixture of Organic acids, Sugar and Alcohols on Carbomix<sup>®</sup> H-NP10 8% (7.8x300mm)



Column:	Carbomix <sup>®</sup> H-NP10:8% (10 $\mu$ m, 8%, 7.8 x 300 mm)
Mobile Phase:	0.5, 1.5, 2.5 mM H <sub>2</sub> SO <sub>4</sub>
Flow Rate:	0.6 mL/min
Temperature:	55 °C, 60 °C
Detection:	RI
Injection volume:	10 $\mu$ L
Samples:	1. Pyruvate 2. Glucose 3. Succinic acid 4. Lactic acid 5. Formic acid 6. Acetic acid 7. Methanol 8. Ethanol

Keywords: Carbohydrate, Carbomix, Carbomix H, NP10, 8% crosslinking, hydrogen form, organic acid, alcohol, pyruvate, glucose, succinic acid, succinate, lactic acid, lactate, formic acid, formate, acetic acid, acetate, methanol, ethanol