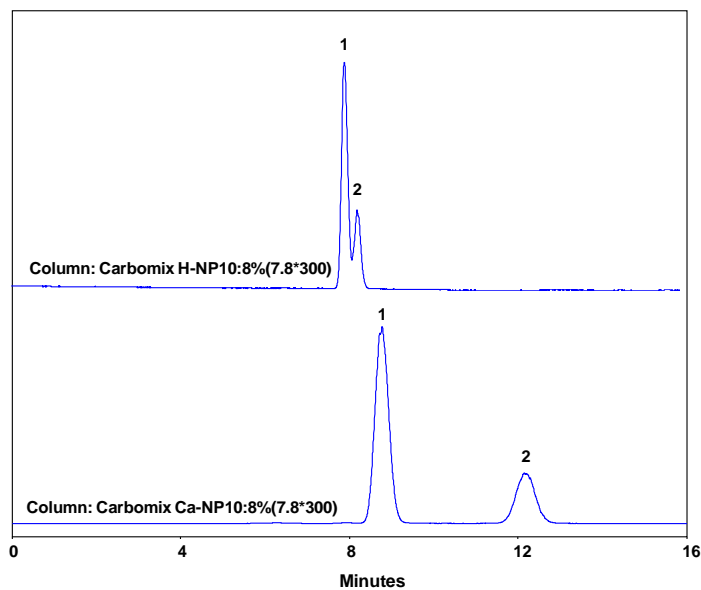




## Analysis of sorbitol and xylitol on Carbomix (7.8x300 mm) – Comparison of Carbomix<sup>®</sup> H/Ca



Columns: Carbomix<sup>®</sup> H-NP10; Carbomix<sup>®</sup> Ca-NP10:8% (8% crosslinking, 7.8x300 mm)  
Mobile Phases: TFA solution, pH 2.5 for Carbomix<sup>®</sup> H; H<sub>2</sub>O for Carbomix<sup>®</sup> Ca  
Flow Rate: 0.6 mL/min  
Detection: ELSD  
Samples: 1. sorbitol; 2. xylitol

Keywords: Carbohydrate, Carbomix, ELSD, sorbitol and xylitol, ionic form