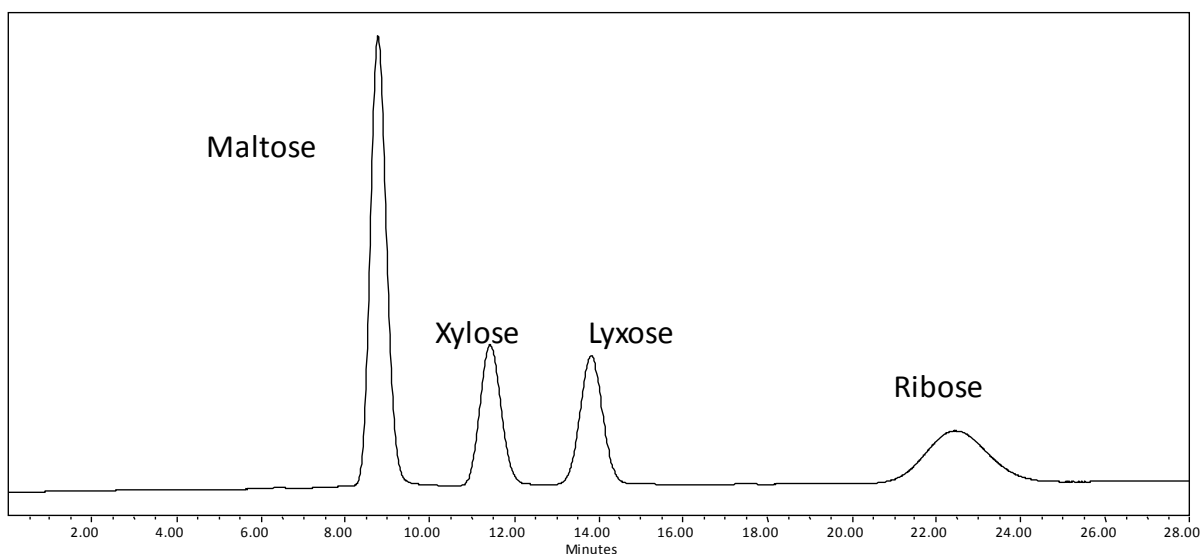
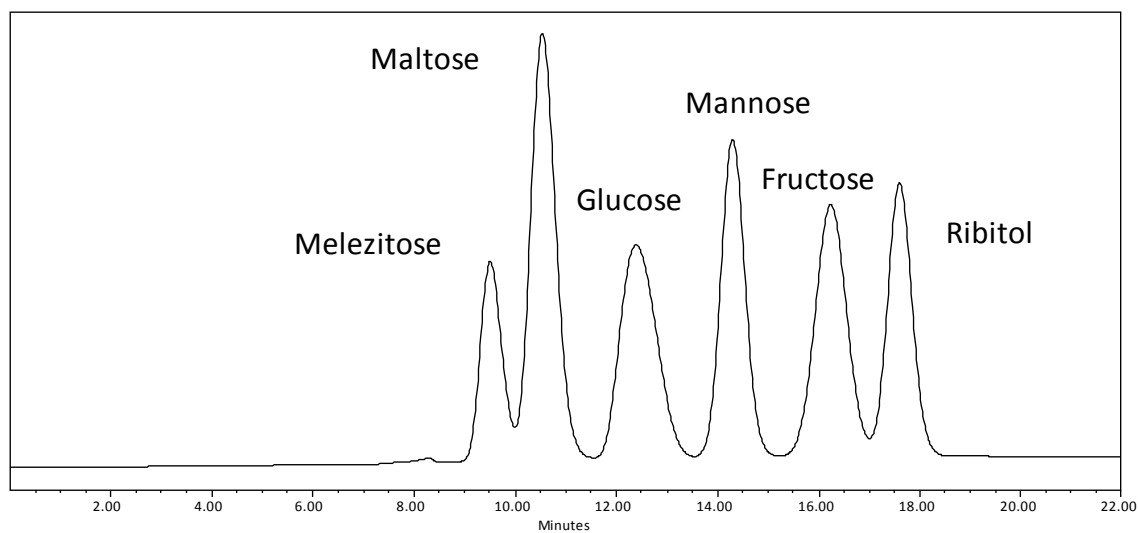




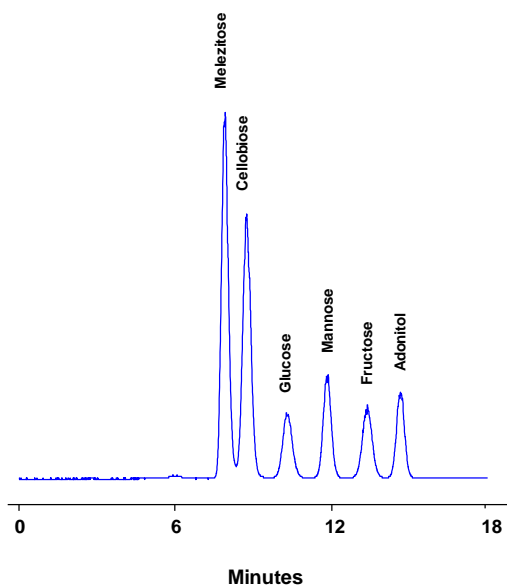
Analysis of Carbohydrates on Carbomix[®] Ca-NP10 (10 μ m, 8%, 7.8x300 mm)



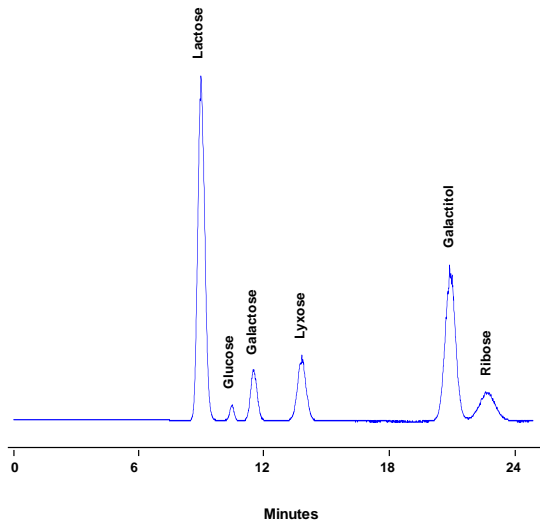
Column: Carbomix[®] Ca-NP10 (10 μ m, 8%, 7.8x300 mm)
Mobile Phase: water
Temperature: 80 °C
Flow Rate: 0.6 mL/min
Detection: RI
Samples: maltose, xylose, lyxose, ribose



Column: Carbomix[®] Ca-NP10 (10 μ m, 8 %, 7.8x300 mm)
Mobile phase: Water
Temperature: 80 °C
Flow rate: 0.5 mL/min
Detection: RI
Injection Volume: 10 μ L
Samples: Melezitose, Maltose, Glucose, Mannose, Fructose, Ribitol



Column: Carbomix[®] Ca-NP10 (10 μ m, 8%, 7.8x300 mm)
Mobile phase: Water
Flow rate: 0.6 mL/min
Temperature: 85 $^{\circ}$ C
Detection: ELSD
Injection volume: 0.5 μ L
Samples: Melezitose, Cellobiose, Glucose, Mannose, Fructose, Adonitol



Column: Carbomix[®] Ca-NP10 (10 μ m, 8%, 7.8x300 mm)
Mobile Phase: water
Flow Rate: 0.6 mL/min
Temperature: 85 $^{\circ}$ C
Detection: ELSD
Injection Volume: 2 μ L
Samples: sucrose, glucose, galactose, fructose, sorbitol

Keywords: Carbohydrate, Carbomix, calcium form, maltose, xylose, lyxose, ribose, melezitose, maltose, glucose, mannose, fructose, cellobiose, sucrose, galactose, ribitol, adonitol, sorbitol