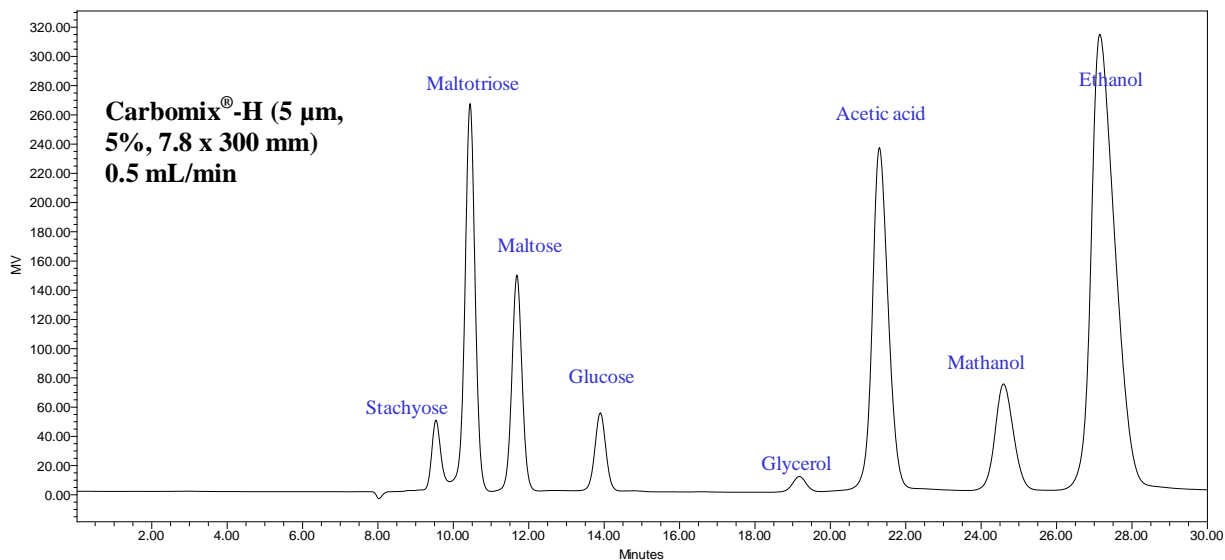
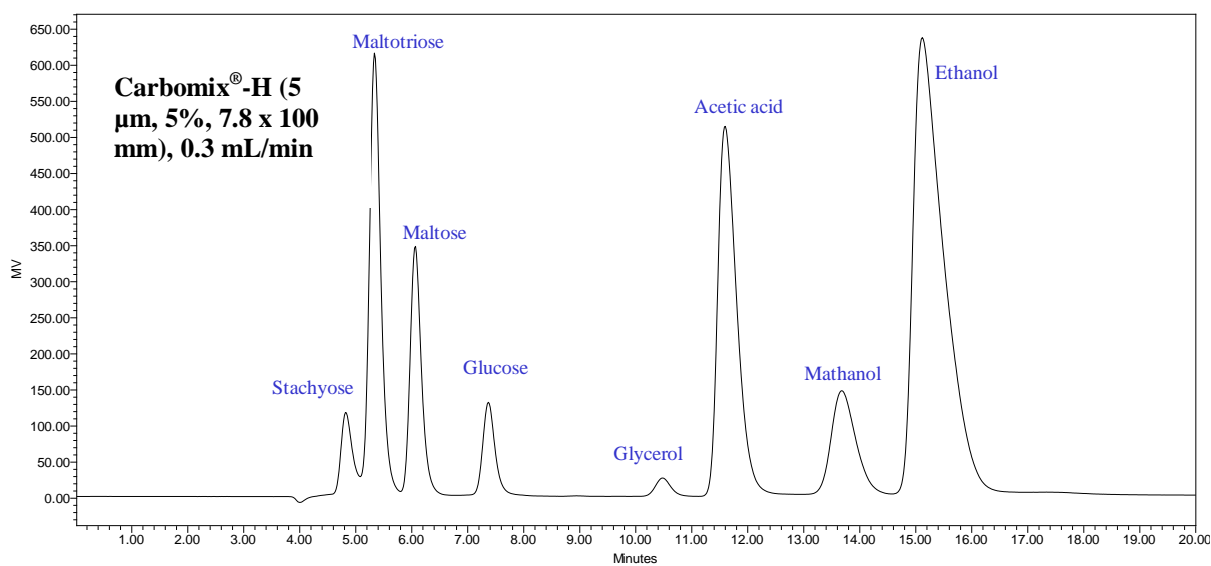




## Analysis of Ethanol Production Broth on Carbomix®-H (5 µm, 5%, 7.8 ID)



Mobile Phase: 2.5 mM H<sub>2</sub>SO<sub>4</sub>  
Temperature: 55 °C  
Flow Rate: 0.5 mL/min for 7.8 x 300 mm, 0.3 mL/min for 7.8 x 100 mm  
Detection: RI  
Injection volume: 20 µL  
Samples: stachyose, maltotriose, maltose, glucose, glycerol, acetic acid, methanol, ethanol



Keywords: Carbohydrate, Carbomix, hydrogen form, sugar, sugar alcohol, ethanol production broth, bio-fuel